

# PLEASE READ BEFORE DOWNLOADING AND FILLING OUT THIS FORM

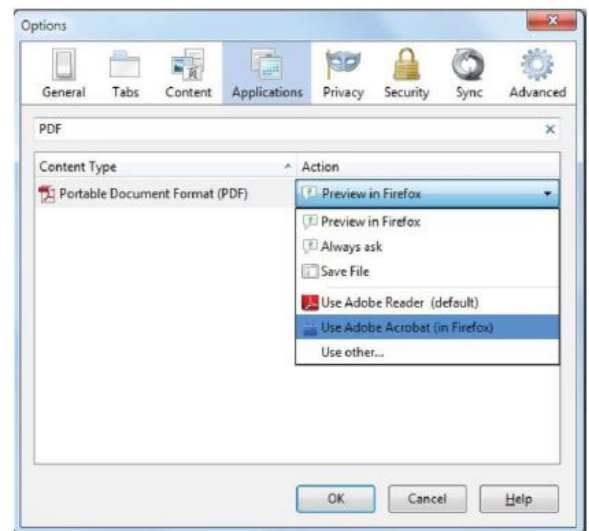
To complete the PDF form you must have Adobe Acrobat or Reader available on your device. Download free Adobe Acrobat Reader DC software if necessary. For Edge, Firefox, Chrome or Safari web browsers follow the instructions below.

## How to disable the built-in PDF viewer and use Adobe Acrobat Reader

Sometimes the Internet browser's built-in PDF viewer may make fillable forms malfunction. If you experience problems, below are instructions on how to disable the automatic viewer and allow you to complete the form in Adobe Reader or Acrobat.

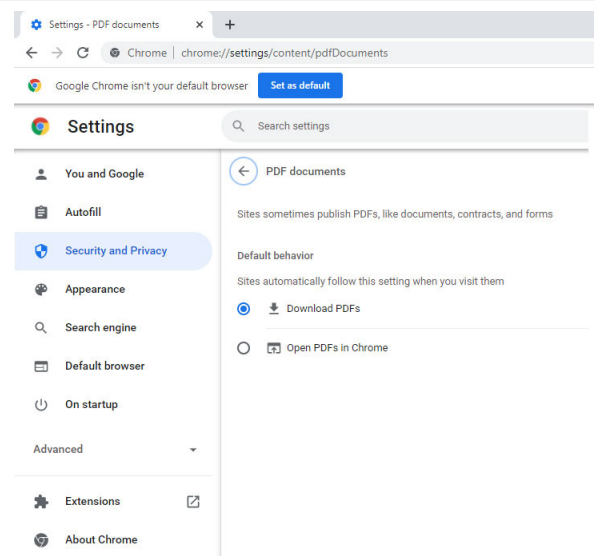
### FIREFOX - To switch from the built-in PDF viewer to Adobe PDF viewer Firefox:

1. At the top of the Firefox window, click on the Firefox button and then select Options (if you have an older version of Firefox, Options may be found by clicking the Tools button at the top of the window).
2. Select the Applications panel.
3. Find Portable Document Format (PDF) in the Content Type list and click on it to select it.
4. Click on the drop-down arrow in the Action column for the above entry and select Use Adobe Acrobat (in Firefox).



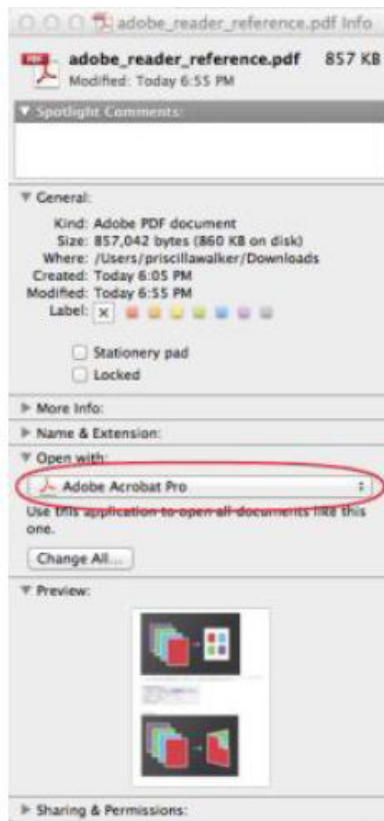
### CHROME - To switch from the built-in PDF viewer to Adobe PDF viewer Chrome:

1. Open Chrome and type **"chrome://settings/content/pdfDocuments"** in the URL bar in the browser.
2. Where it says "Download PDF files instead of automatically opening them in Chrome" click on the toggle button to enable Chrome to download the PDF instead of opening in Chrome.
3. Close settings tab.

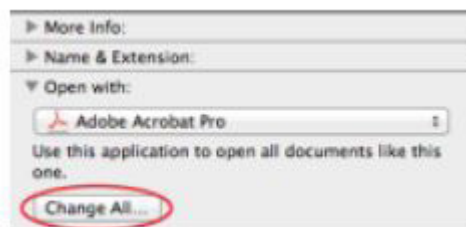


## SAFARI - To switch from the built-in PDF viewer to Adobe PDF viewer Safari:

1. In the Finder, select a PDF, and choose File > Get Info.
2. Click the arrow next to Open With to expose the product menu.
3. Choose either Adobe Acrobat or Adobe Reader from the application menu.



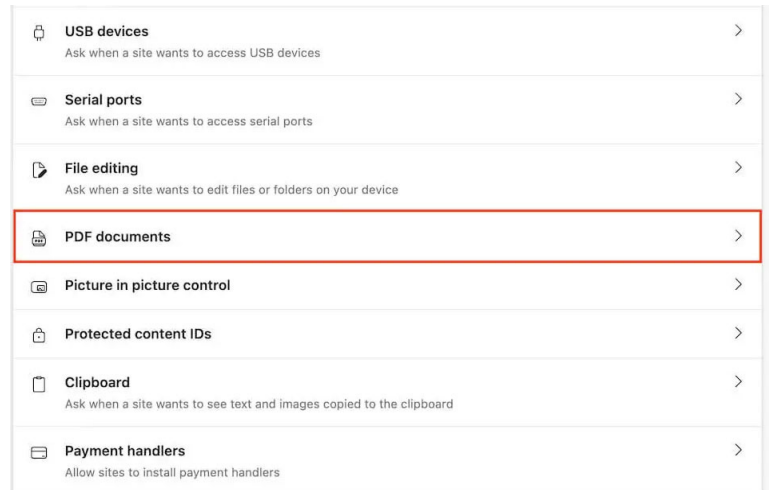
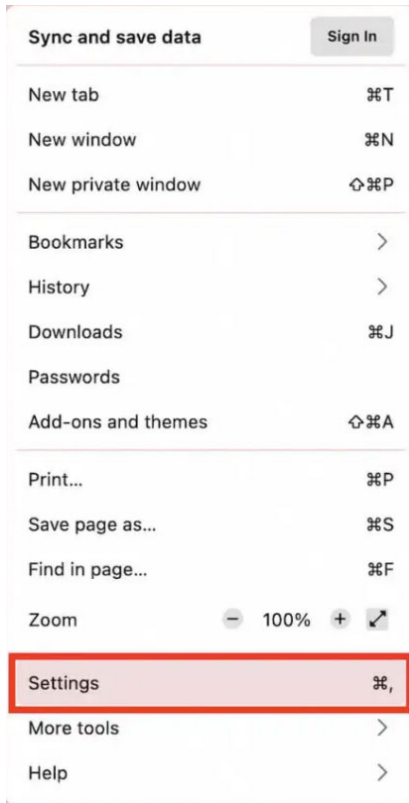
4. Click the Change All button.



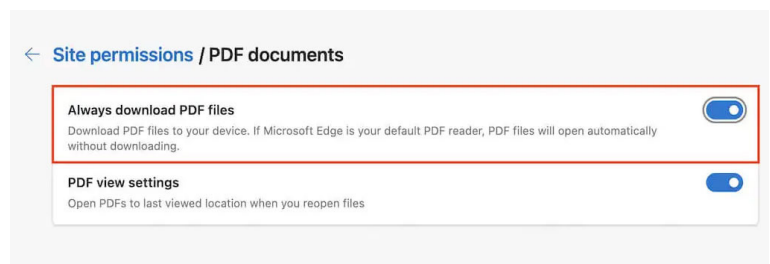
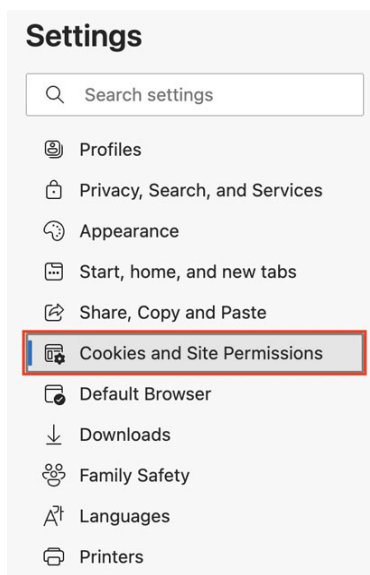
5. When asked if you want to change all similar documents, click Continue.

## EDGE - To switch from the built-in PDF viewer to Adobe PDF viewer Edge:

1. Open the Edge menu (select icon with three dots at the top-right of the screen) and choose Settings.
3. Scroll down the screen and select PDF documents.



2. Select Cookies and Site Permissions on the sidebar.
4. Turn on the switch next to Always download PDFs.



For more information about enabling Adobe Acrobat or Acrobat Reader in Firefox, Chrome, or Safari please visit: <https://helpx.adobe.com/acrobat/using/display-pdf-in-browser.html>

